

ILD-4x05-VD-IRW datasheet and quick installation guide

| | ILD-410S-VD-IRW | ILD-420S-VD-IRW |
|-------------------------------------|--|-----------------|
| Kamera | | |
| Image sensor | Aptina 3MP 1/3" WDR | |
| Sensor size | Nappal/Éjjel/LED: 0,65lux / 0,01lux / 0lux | |
| Sensitivity | 1/6 s - 1/20.000 s | |
| Lenses (optional) | 3-10,5mm (motorized zoom/focus/P-iris/ICR) | |
| IR LED | 35pcs of IR LEDs | |
| IR illumination distance | max. 30 m | |
| Illumination angle | 50° | |
| WDR mód | Software | True |
| Tömörítés | | |
| Video Compression | Intellio Video Codec (IVC), H.264, Motion JPEG | |
| Bit Rate | 32 Kbps – 18 Mbps | |
| Streaming | Intellio Video Streaming, Dual streaming over RTSP | |
| Network | | |
| Tamper | Connection Lost Signal, Video Lost Signal | |
| Protocols | FTP, TCP/IPv4, DHCP, DNS | |
| Security | Camera Side User Name and Password | |
| Interface | | |
| Ethernet | 10BaseT/100BaseTX, RJ45 | |
| Reset Button | Reset To Factory Defaults (IP Address Reset) | |
| General | | |
| Design | IP65 | |
| Operating Condition | -30 ... +50 °C | |
| Power Supply | PoE (IEEE 802.3af) – PoE Class 3 or DC: 24-50 VDC | |
| Power Consumption | Max. 13 W | |
| Dimensions | 82x89x258 mm (HxWxD) | |
| Weight | 900 g | |
| Certificates | CE: EN 55022, EN 55024; RoHS | |
| Server independent Operation | | |
| MicroSD-card | SDHC-compatible | |
| Network storage | Shared folder (Windows 7, 8, 8.1) | |

Installation Guide

Necessary tools

- T-20 torx screwdriver (in the package)
- PH1 Phillips head screwdriver
- PH2 Phillips head screwdriver

Fixing the camera

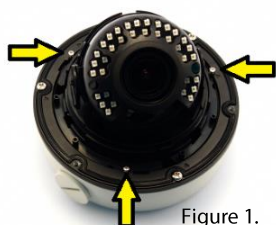


Figure 1.

Remove the dome cover by unscrewing the three T-20 torx screws until the half-way point. Keep unscrewing the three screws of the camera unit until the camera unit becomes moveable. Turn it counter-clockwise until the fastening lugs are freed, then remove the camera unit. (figure 1.)

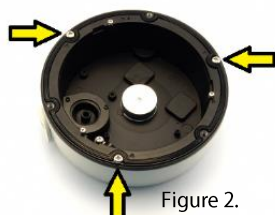


Figure 2.

Unscrew the three screws of the wall mount bracket, then remove the base casting. (figure 2.)

Secure the wall mount bracket to the wall or ceiling through the three holes on the wall mount bracket. Make sure to always use bracket assemblies befitting the given type of wall. (figure 3.)



Figure 3.

By omitting the wall mount bracket the camera can be sunk into the false ceiling. In this case, the base casting must be sunk into and fitted directly to the false ceiling. (figure 4.)



Figure 4.

Drive the network cable through the rubber gaskets on the base casting, then fit the base casting to the wall mount bracket with its three screws. Fit the network cable to the base casting using a cable fastener. Cut the cable to length 10 cm from the cable fastener. Fit the RJ-45 connector to the cable. (figure 5.)

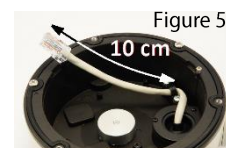


Figure 5.

Connect the RJ-45 connector to the socket on the bottom of the camera unit. Insert the lugs of the camera unit into the slots on the base casting, then inside the groove turn it 10 degrees counter-clockwise. Fix the camera unit with the three screws on the base casting. The fastening screws must be aligned with the hole on the center of the lug.

Setting the camera direction

The camera unit has three degrees of freedom.

Adjusting zoom and focus

The camera objective can be remote-controlled allowing the zoom and focus to be adjusted from the web interface of the camera or the Intellio management software (IVS 2.8 and newer).

The objective must not be adjusted manually!

After the field of view has been adjusted, the autofocus will automatically adjust the sharpness after a few seconds, which can later be modified in the web interface of the camera or the Intellio management software. Please refer to the chapters on the camera web interface and the Intellio Video System users' guide for more detailed instructions on remote controlling the objective.

Finishing the installation

Make sure the rubber gasket on the outer rim of the base casting is in place. Mount the dome cover on the base casting with its three T-20 torx screws. Remove the safety foil from the dome cover.

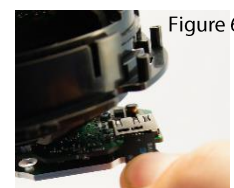


Figure 6.

Inserting the SD card

To insert the SD card the camera unit must be taken out exposing the card slot on its bottom. (Figure 6.)

Resetting factory defaults

The camera can be reset to the factory default by pressing the reset button on the bottom of the camera for around 10 seconds. Successful resetting is signalled by the green LED next to the button. (figure 7.)



Figure 7.