

# INITIO CAMERAS INSTALL GUIDE

## Camera Activation

Intellio Video System 5 server directory contains *Intellio Device Explorer* which helps in finding, activating and setting **Intellio Initio (ILB)** cameras.

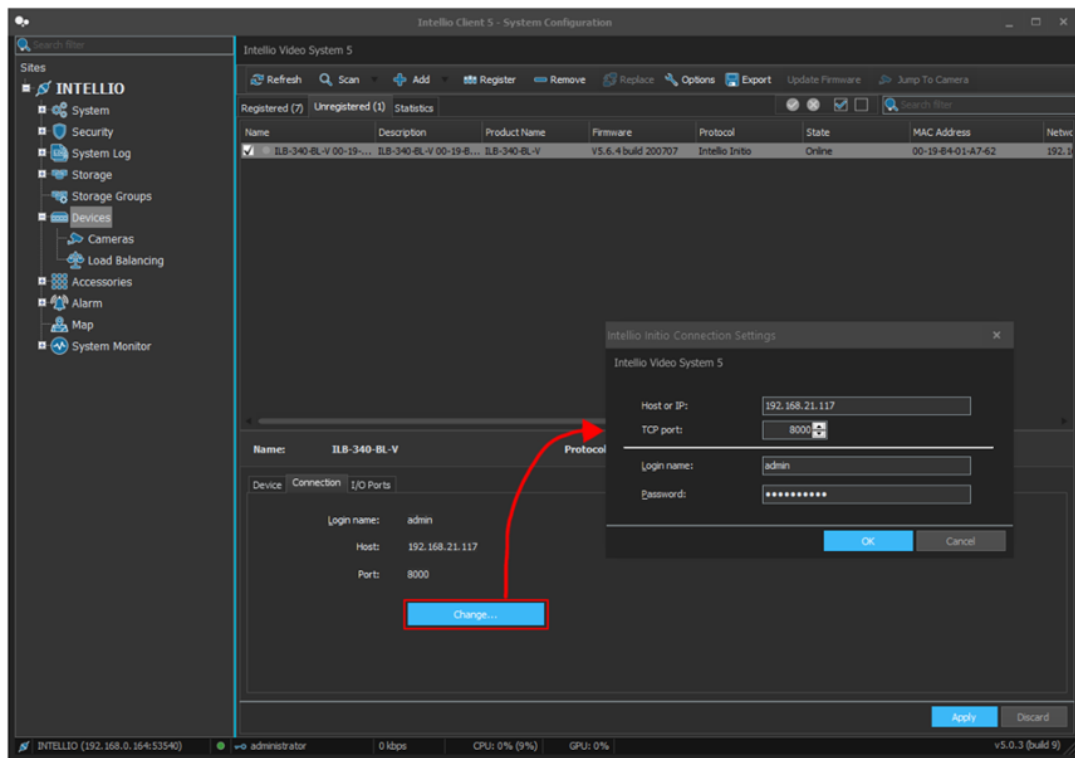
**Important:** Intellio Initio cameras have to be activated before using them! You have to set the initial admin password during activation.

After selecting a device in the *Intellio Device Explorer*, you can...

- Click on **Activate Device** to activate the device. If it's already activated, the button remains gray.
- Click on **Network Settings** to change the device's network settings (*requires the admin password*).
- Click on **Device Webpage** to launch Internet Explorer and locate to the device's web interface.

## IVS Search Function

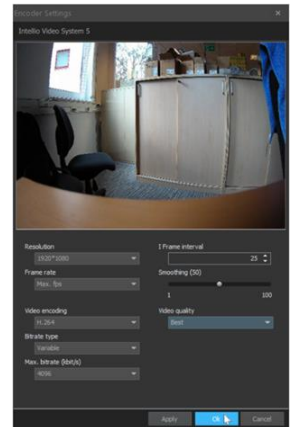
The **System Configuration / Devices / Scan / Search Intellio Initio (ILB) devices** function of the Intellio Video System 5 allows for locating the Intellio Initio (ILB) cameras on the sub-networks accessible by the server. These devices will be listed under the **Unregistered** tab.



Cameras found during the search requires authentication. Select it from the list then open the **Connection** tab. Along with the login name, IP address and port is also listed there. If you type this address in a web browser, the web interface of the camera will open allowing you to identify the camera. Next, select **Change** and type in the login name and password pertaining to the camera. Click on **Refresh** button before clicking **Register**.

**Important:** Make sure you are trying to input the appropriate password. On default settings, the device locks itself for half an hour after trying a bad password for 5-7 times! You can turn this off on the camera's web interface:

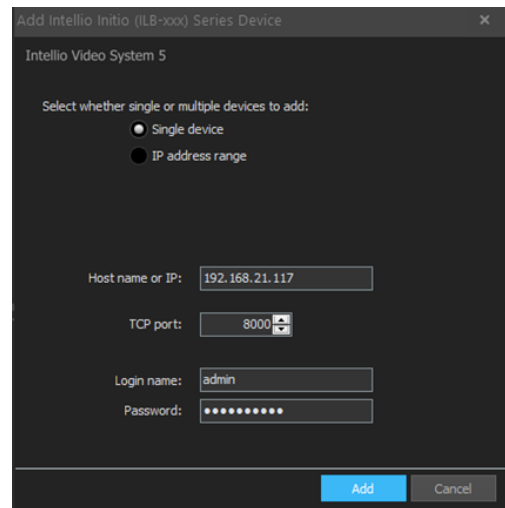
**Configuration > System > Security.**



## Adding Manually

In case you wish to add an Intellio Initio (ILB) camera to the system with a known IP address:

- On the **System Configuration / Devices / Cameras** page, click on **Add**, then select **Add Intellio Initio (ILB-xxx) Series...**
- Enter the IP address manually into the **Host name** or **IP, Port** field and enter the **Login name** and **Password** of the device. The default TCP port is 8000.
- Click on **Add**.



Select the device and click on **Register** button.

## Image Settings

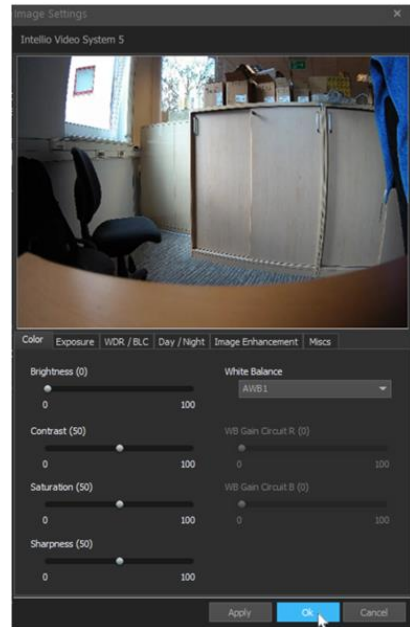
Select an already registered Initio camera on the **System Configuration / Devices / Cameras** page. Go to the **Image Settings** tab and click on **Image Settings** button.

You can modify multiple Initio cameras at once by selecting them, then right click and select **Image Settings....**

## Encoder Settings

To edit the video encoder of an added Initio camera, go to the **System Preferences / Devices / Cameras** page. After selecting an Initio camera, use the **Profile Settings** tab and click the **Main Stream Encoder** button (or **Sub Stream Encoder**).

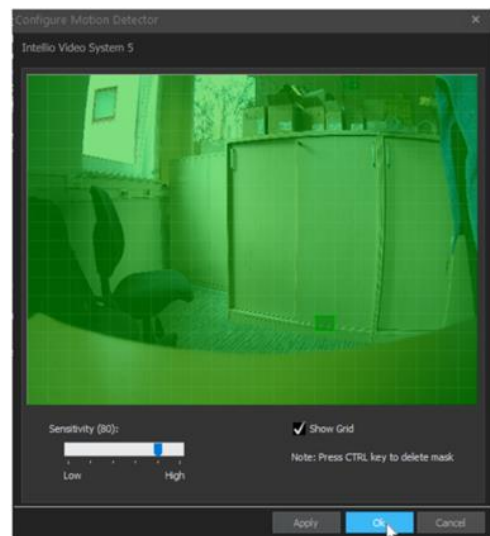
You can modify multiple Initio cameras at once by selecting them, then right click and select **Encoder Settings**.



## Motion Detection

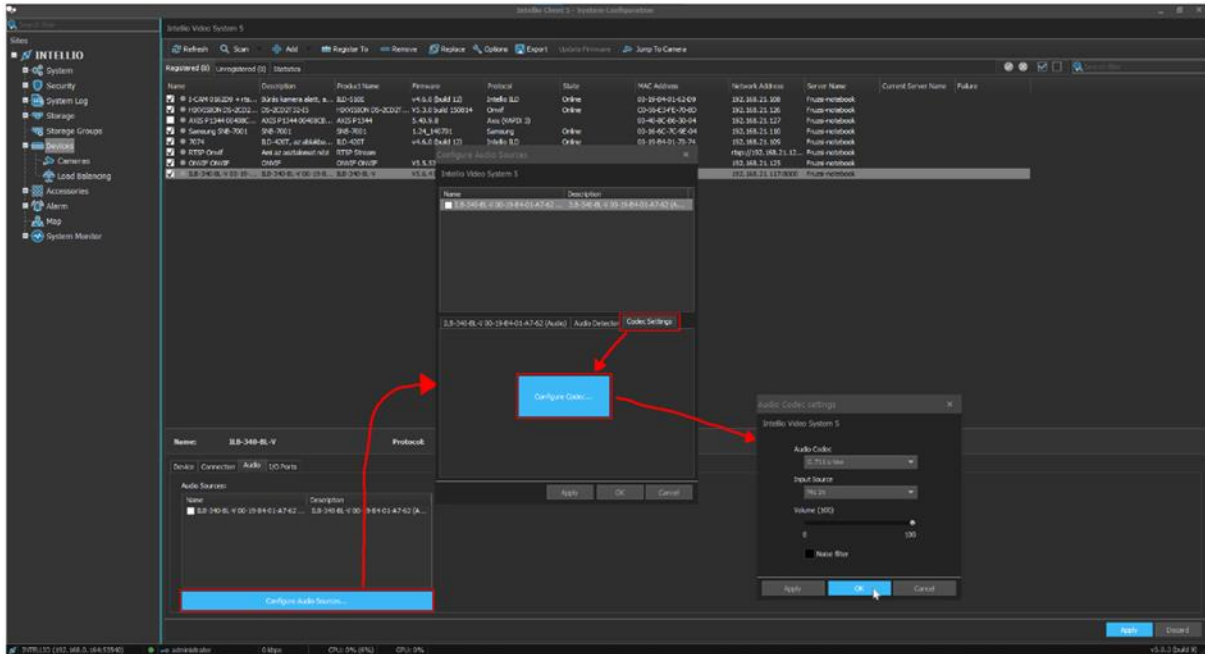
Go to **System Configuration / Devices / Cameras** page. After selecting an Initio camera, use the **Motion Detection** tab and click the **Motion detector** button.

Use your mouse to draw rectangles. Hold down **CTRL** key to delete mask.



## Audio Settings

Go to **System Configuration / Devices** page. After selecting an Initio camera, use the **Audio** tab and click the **Configure Audio Sources...** button.

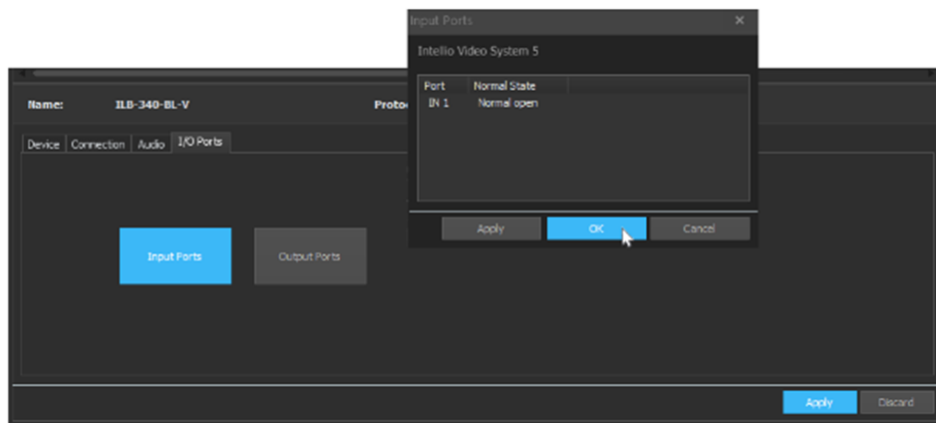


Supported codecs:

- G.711 PCM u-Law/A-Law (8000 Hz)
- G.726 ADPCM-16/24/32/40 Kbps (8000 Hz)

## I/O Port Settings

Go to **System Configuration / Devices** page. After selecting an Initio camera, use the **I/O Ports** tab and click the **Input** or **Output Ports** button.



Receiving incoming signals requires a **Multi IO input** detector:

- **System Configuration > Alarm > Detectors**
- **System** detector, **Multi IO Input, OK**.
- Then select **Detector** tab and select the desired port's checkbox.

Managing outputs requires a **Multi IO action**:

- **System Configuration > Alarm > Actions**
- **Multi IO action, OK**.
- Then select **Action** tab and select the desired port's checkbox.

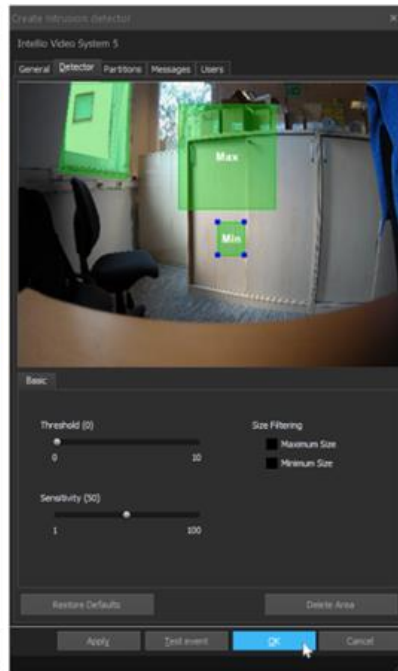
## Onboard Intelligent Detectors

Maximum one detector type is allowed for one camera. Use **Onboard detector** type then select an Initio camera and the desired detector type.

### Video tampering



### Intrusion



### Line crossing

